

I N S T E O N

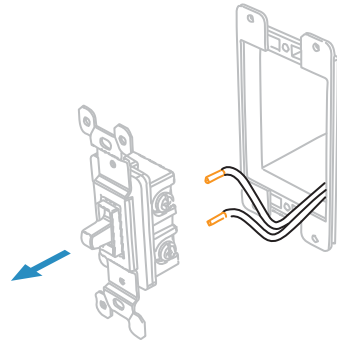
## Getting Started with Insteon Dimmer Switch



Get Started

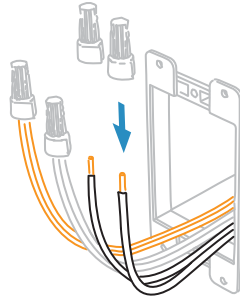
[insteon.com/get-started-2477d](http://insteon.com/get-started-2477d)

- 1 **Turn off power** at the service panel and remove the existing wall switch.

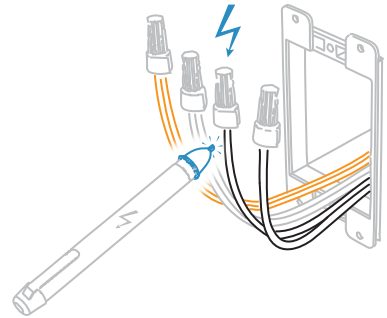


Installation to be performed only  
by a qualified person.

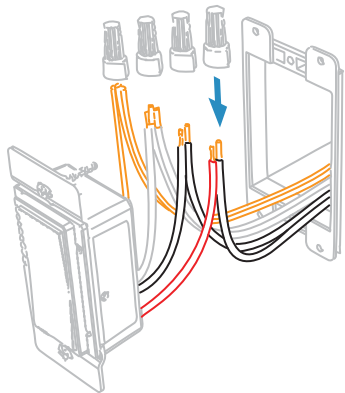
- 2 **Turn off power** at the service panel and remove the existing wall switch. Unfold all of the wires from within the junction box. Separate the black wires and cap them with wire nuts.



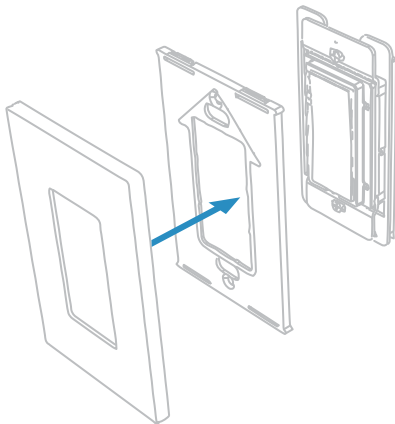
- 3 **Turn on power** and use a voltage detector to identify the live wire; this is your line wire.



- 4 **Turn off power** and connect the corresponding wires from the junction box with the Insteon Wall Switch and cap them with wire nuts.



- 5 Install the Insteon Wall Switch, attach the wall plate and **turn on power**.



Additional wiring diagrams available at [insteon.com/get-started-2477d](http://insteon.com/get-started-2477d)

- 6 Follow the instructions in the Insteon app to add Dimmer Switch.



- 7 When prompted, press and hold Dimmer Switch's set button until you hear a double-beep.



Only connect dimmable bulbs to Dimmer Switch.

For more documentation, visit:  
[insteon.com/get-started-2477d](http://insteon.com/get-started-2477d)